

Lighting Control Solved



- Ideal for small and medium size venues and productions
- Simple, affordable, powerful
- Intuitive natural-language control
- Advanced show control functions
- Support for external monitor and architectural wall stations
- Silent, compact design

EASY TO USE TASK-ORIENTED NAVIGATION

Select the Lights you want to control.

- No command line to learn – manage images, not numbers
- Cognito² groups Lights automatically to reduce setup time
- Groups you create reduce programming time
- Real-time visual feedback of Lights at a glance
- Extensive library of over 3000 fixture definitions

Control your Lights quickly and easily with a large, well-ordered assortment of tools.

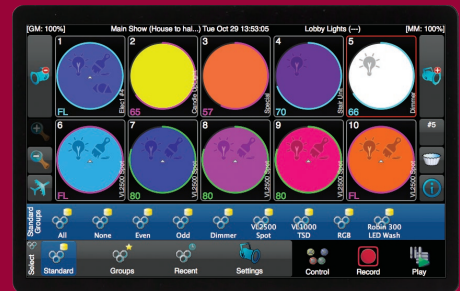
- Never look at a DMX chart again
- Tools categorized by Intensity, Color, Position and Shape – recall them in an instant on the console hardware
- Selectable Color Temperatures with Dim to Warm option on all LEDs, and Color Spaces shared between different additive or subtractive systems
- Powerful fanning tools give you that “big look” quickly and with ease
- Apply comprehensive, simple-to-adjust effects to any attribute

Record what you see for Memory, Cue and Time-clock event playback.

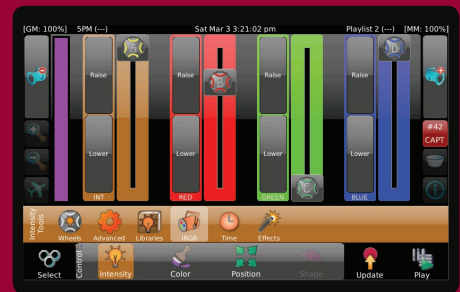
- Save looks to an unlimited number of Memories on sliders and buttons for on-the-fly playback
- No cue number constraints – record, drag and drop them on an unlimited number of Playlists for scripted shows
- Capture Groups, Colors, Positions and Shapes into custom reference libraries
- Move In Black and unlimited attribute timing options enable nuanced show playback
- Actions on Cues and Memories associate powerful show control functions with any trigger

Play back your work and see it come together.

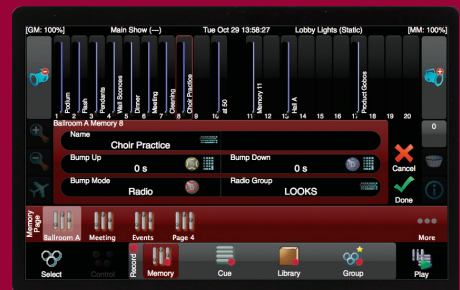
- Hands on and heads up: Playback is a breeze with well-positioned controls
- Repurpose your recorded cues as Chases. Change direction, fade rates or tap in a beat to match your music
- Achieve perfect cue execution every time using external or internal timecode
- Schedule events to run at a specific time of day or relative to astronomical events based on your location
- Password-protected Wall Station mode lock-out function presents a set of Memories or a Playlist for operation from the touchscreen
- DMX512 IN enables Memory “Wing” expansion from faders on a remote DMX512 console



SELECT



CONTROL



RECORD



PLAY



LIGHTING CONTROL CONSOLE

Cognito² will not intimidate the less-experienced user and will not disappoint the most demanding professional.

- Fully operational with or without external monitor
- DMX512 and Ethernet output including Art-Net, KiNET, E1.31 sACN and Pathport
- Use any VNC viewer for remote control and playback
- Extend playback to remote network sliders and buttons using customizable NSB wall stations
- Unlimited Intensity, Color, Position and Shape attribute timing
- Automatic Move-In-Black feature with Memories and Cues
- Power-over-Ethernet operation
- 7" capacitive touchscreen
- 7U Rack-mount kit option
- Multi-platform off-line editor; becomes a full 512 channel console with connected Pathports
- Upload show files to networked Choreo controllers
- Continually updated library of fixture definitions available online

Cognito² is available in three models: Starter, Pro512, and Pro1024.

Each is priced to suit the artistic needs of:

- Schools
- Houses of worship
- Touring productions
- Museums
- Theme parks
- Community theaters
- Film and television productions
- Corporate theaters



Features	Starter	Pro512	Pro1024
Output addresses	512	512	1024
Supports Networked Sliders and Buttons (NSB)	Yes	Yes	Yes
Pathport	Yes	Yes	Yes
Art-Net	Not enabled	Yes	Yes
ANSI E1.31 sACN	Yes	Yes	Yes
KiNET	Not enabled	Yes	Yes
DMX512 OUT ports	1	2 ¹	2
DMX512 IN triggers	Not enabled	Yes	Yes
MIDI Show Control	Not enabled	Yes	Yes
MIDI Timecode	Not enabled	Yes	Yes
RS232 serial / Telnet support	Not enabled	Yes	Yes
Contact closures	Not enabled	3	3
Time and astronomical scheduling	Not enabled	Yes	Yes
Accessories			
90V to 240V Regulated power supply	Yes	Yes	Yes
Dust cover	Yes	Yes	Yes
7U Rack-mount kit	Optional	Optional	Optional
NSB Wall Stations	Optional	Optional	Optional

Notes:

1. Universe 1 mirrored on both OUT ports.

Protected By US Patents D707189, 9014828 and patents pending.



A pioneer in entertainment lighting, Pathway Connectivity is renowned for solid, easy-to-use equipment with comprehensive, robust features.

Our reputation for innovation and reliability is based on over twenty-five years commitment to enhancing the functions and interoperability of lighting systems around the world.



For demonstration and training videos, visit our Pathway Connectivity YouTube Channel at www.youtube.com/pathwayconnectivity

#103-1439 17 Avenue SE
Calgary AB Canada T2G 1J9
T 403.243.8110
F 403.287.1281
pathwayconnect.com

©2014-2015 Acuity Brands Lighting, Inc. All rights reserved.
Rev. 04/19 PW_2142